

# Catálogo

## Máquinas

**FURD**®



[www.tcnr.com.br](http://www.tcnr.com.br)



**FURD®**

JINING FURUIDE MACHINERY MANUFACTURING CO., LTD



- Vibratory Road Roller
- Concrete Equipments
- Mobile Light Tower
- Road Crack Sealing Machine
- Mini Excavator

## CATALOGUE





## FYL-D206/FYL-D208 Single Drum Road Roller



Hydraulic pump



Hydraulic steering gear



Beautiful and robust cab



Compact structure, super strong steel wheels, Strong pressure



High quality travel tyre



High-definition rear view mirror



Liquid level indicator



Equipped with air fan, work comfortably, air conditioner is optional



Flexible reversing handle

### Technical Specification

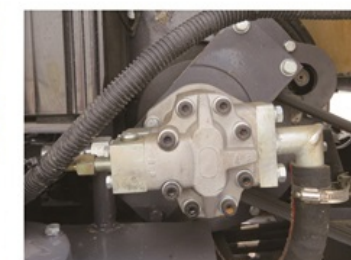
Model	FYL-D206	FYL-D208	Model	FYL-D206	FYL-D208
Walk Speed	0-8km/h		Fuel Tank Volume	130L	150L
Gradeability	30%		Hydraulic Oil Tank	130L	140L
Turning Radius	4850mm	4900mm	Engine Model	Yunnei Water Cooled Diesel YN4A055	Yunnei Water Cooled Diesel YN4EZ080-30CR
Static Linear Load	170N/cm	172N/cm	Power	54HP	79HP
Drive Type	Torque converter driving		Rotate Speed	2400rpm	2400rpm
Drive Wheel	Rear wheel		Battery	24V/120AH	
Walking Brake	Pneumatic brake		Vibration drum size	Diameter:1200mm	Diameter:1200mm
Vibration Type	hydraulic vibration			Width: 1700mm	Width: 1860mm
Vibration Frequency	45Hz		Working Weight	6000kg	8000kg
Nominal Amplitude	0.5mm		Size	5000X1800X2600mm	5100X2050X2800mm
Vibration Capacity	70KN	106KN			



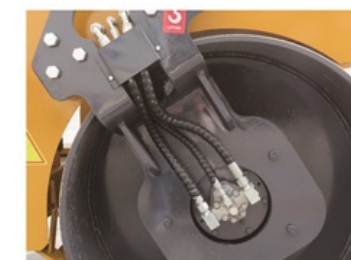
## FYL-D203 Road Roller



Changchai ZN390Q engine



Imported hydraulic variable plunger pump



Hydraulic vibration



Hydraulic steering



High quality travel tyre



Working lamp in the front and rear



Multi-function operation panel easy to operate



Luxurious seat



Throttle control handle

### Technical Specification

Model	FYL-D203		
Walk Speed	0-7.3km/h	Vibration Frequency	50Hz
Gradeability	20%	Exciting Force	35KN
Static Linear Load	114N/cm	Turning Radius	4600mm
Engine Model	Changchai ZN390Q	Vibration wheel width	1200mm
Power	22kw	Working Weight	3500kg
Rated speed	2400r/min	Package Size	3505×1390×2265mm



## FYL-1400 Road Roller



## 4000kg Road Roller



Kubota diesel engine



Imported hydraulic variable plunger pump



Double drums hydraulic motors driving



Hydraulic vibrating, double drums or front drum vibrating can be switched freely



Hydraulic steering



Large plastic water tank free from corrosion and convenient for water spraying



Smooth steel drum



Combinated tires



Trench steel drum

### Technical Specification

Model	FYL-1400		
Walk Speed	0-10km/h	Water Tank	200L
Gradeability	40%	Hydraulic Oil Tank	70L
Drive Type	Hydraulic Transmission	Engine Model	Kubota Diesel Engine V2403 Changchai Diesel Engine ZN490B
Vibration Control	Hydraulic Vibration	Power	45.7HP / 48HP
Static Linear Load	"Front drum: 150.9N/cm Rear drum: 143N/cm"	Steel Wheel Size	Φ900mm X1400mmX2
Nominal Amplitude	0.5mm	Dimension	2865X1516X2745mmmm
Vibration Frequency	55Hz	Working Weight	4000kg
Exciting Force	2X48KN	Starting Mode	Electric



## FYL-1200 Road Roller

3000kg Road Roller



Kubota water cooled diesel engine



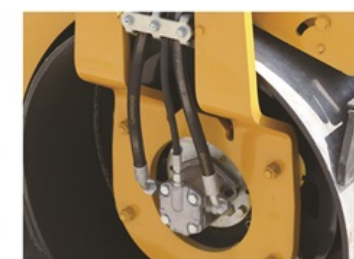
Perkins water cooled diesel engine



Imported hydraulic variable plunger pump



Imported plunger motors, double drums hydraulic driving



Hydraulic vibration is driven by imported motor



Hydraulic steering



Double control handles with vibration button



Extra-large plastic water tank, free from corrosion and easy to spray water



Wear-resistant scraper, can lift up

Model	FYL-1200		
Walk Speed	0-12km/h	Hydraulic Oil Tank	48L
Gradeability	30-40%	Engine Model	Kubota Diesel Engine V1505      Changfa Diesel Engine CF2B35
Drive Type	Hydraulic Transmission	Power	35.5HP      35.4HP
Vibration Control	Hydraulic Vibration	Steel Wheel Size	φ700X1200mmX2
Static Linear Load	125/115N/cm	Dimension	2495X1310X2485mm
Nominal Amplitude	0.5mm	Working Weight	3000kg
Vibration Frequency	60HZ	Starting Mode	Electric
Exciting Force	2X30KN		
Water Tank	200L		



## FYL-1200T Combinated Tires Road Roller

3000kg Road Roller



Tyre size  
D690X235mmX4



Perkins water cooled diesel engine



Kubota water cooled diesel engine



Imported hydraulic variable plunger pump



Can choose double drums hydraulic driving or front drum hydraulic driving



Hydraulic vibration is driven by imported motor



Hydraulic steering



High quality combined tires



Extra-large plastic water tank, free from corrosion and easy to spray water



Wear-resistant scraper, can lift up

Model	FYL-1200T				
Walk Speed	0-12km/h	Engine Model	Perkins Deisel Engine 403D-15	Kubota Diesel Engine V1505	Changfa Diesel Engine CF2B35
Gradeability	30-40%				
Drive Type	Hydraulic Transmission	Power	32.7HP	35.5HP	35.4HP
Vibration Control	Hydraulic Vibration	Starting Mode	Electric		
Vibration Frequency	60HZ	Steel Wheel Size	φ 700X1200mm		
Exciting Force	30KN	RearTire model	9.6/65-15		
Water Tank	200L	Tire Size	D690X235mm		
Hydraulic Oil Tank	48L	Tire Quantity	4 pcs		
Dimension	2495X1310X2485mm	Working Weight	3000kg		



## FYL-1100 Road Roller

2500kg Road Roller



Customizable With Hydraulic Double Drums Vibration



Domestic diesel engine



Imported HANSA variable piston pump



Imported danfoss hydraulic motor direct drive



Hydraulic vibration



Hydraulic steering



Multi-function operation panel, easy to operate



Double drum water spraying, scraper cleaning



Comfortable seat



Working lamps in the front and rear

### Technical Specification

Model	FYL-1100		
Walk Speed	0-6km/h	Water Tank	130L
Gradeability	40%	Hydraulic Oil Tank	80L
Drive Type	Hydraulic Transmission	Engine Model	Changfa Diesel Engine CF2B35
Vibration Control	Hydraulic Vibration	Power	35.4HP
Static Linear Load	98/106N/cm	Steel Wheel Size	φ620X1200mmX2
Nominal Amplitude	0.5mm	Dimension	2600X1275X2480 mm
Vibration Frequency	60HZ	Working Weight	2500kg
Exciting Force	30KN	Starting Mode	Electric



# FYL-1000 Road Roller

1800kg Road Roller



Customizable With Hydraulic Double Drums Vibration



Changfa 3-cylinder water-cooled diesel engine



Imported HANSA variable piston pump



Hydraulic motor direct drive, double drum driving



Hydraulic vibration



Hydraulic steering



Multi-function operation panel, easy to operate



Double drum water spraying, scraper cleaning



Comfortable seat



Working lamps in the front and rear

## Technical Specification

Model	FYL-1000		
Walk Speed	0-6km/h	Water Tank	130L
Gradeability	40%	Hydraulic Oil Tank	50L
Drive Type	Hydraulic Transmission	Engine Model	Changfa Diesel Engine CF2B35
Vibration Control	Hydraulic Vibration	Power	35.4HP
Static Linear Load	98/88N/cm	Steel Wheel Size	φ560X1000mmX2
Nominal Amplitude	0.5mm	Dimension	2300X1090X2320 mm
Vibration Frequency	60HZ	Working Weight	1800kg
Exciting Force	30KN	Starting Mode	Electric



## FYL-900 Road Roller

1500kg Road Roller



Customizable With Hydraulic Double Drums Vibration

**EPA EURO V**

**CE**



HONDA gasoline engine



Perkins diesel engine



China make diesel engine



Imported variable piston pump



Hydraulic vibration



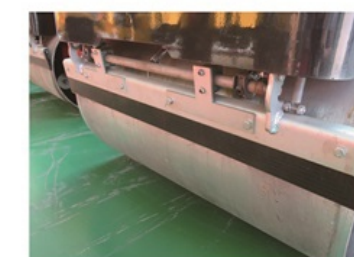
Hydraulic motor,  
double drum driving



Hydraulic steering



Comfortable seat



Double drum water spraying,  
scraper cleaning

### Technical Specification

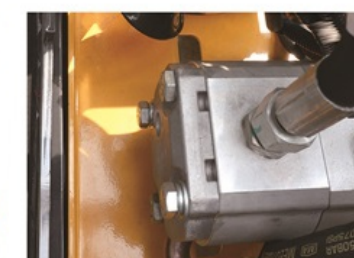
Model	FYL-900					
Walk Speed	0-8km/h	Water Tank	100L			
Gradeability	30%	Hydraulic Oil Tank	60L			
Drive Type	Hydraulic Transmission	Engine Model	Perkins Diesel Engine 403D-11	Kubota Diesel Engine D1105	Honda Gasoline Engine GX630	Changfa Diesel Engine CF13
Vibration Control	Hydraulic Vibration	Power	25HP	25HP	21HP	12HP
Static Linear Load	55/70N/cm	Steel Wheel Size	Φ560mm X900mmX2 / Φ560mm X1000mmX2			
Nominal Amplitude	0.6mm	Dimension	2125X985X2325mm			
Vibration Frequency	65HZ	Working Weight	1500kg			
Exciting Force	30KN	Starting Mode	Electric			



## FYL-R900T Remote control road roller



Perkins diesel engine



Imported variable piston pump



Hydraulic motor,  
double drum driving



Hydraulic vibration



Hydraulic steering



Intelligent remote control



Working lamps in the front and rear



Double drum water spraying  
scraper cleaning



Fuel tank

### Technical Specification

Model		FYL-R900T	
Walk speed	0-7km/h	Engine type	Perkins Diesel 403D-11
Gradeability	30%	Power	25HP
Drive type	Hydraulic transmission	Starting mode	Electric
Vibration Type	Hydraulic vibration	Steel drum size	φ560X900mmX2
Vibration frequency	60Hz	Steel drum thickness	12mm
Exciting force	25KN	Net weight	1300kg
Water tank	40L	Size	2350X970X1250mm
Hydraulic oil tank	60L		



## FYL-890 Road Roller

1000kg Road Roller



Air-cooled diesel engine



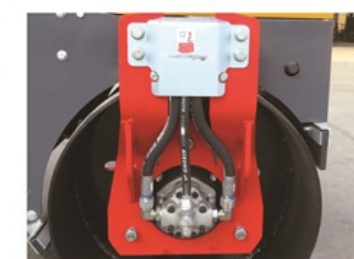
Honda gasoline engine



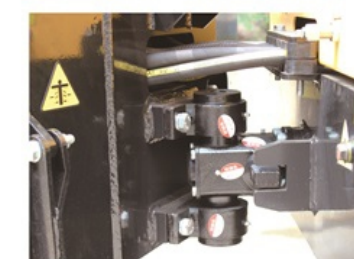
Imported variable piston pump



Hydraulic vibration is driven by imported motor



Hydraulic motor, double drum driving



Hydraulic steering



Operation panel



Electric water spraying



Working lamps in the front and rear

### Technical Specification

Model	FYL-890		
Walk Speed	0-6.5km/h	Water Tank	60L
Gradeability	35%	Hydraulic Oil Tank	35L
Drive Type	Hydraulic Transmission	Engine Model	Air Cooled Diesel Engine CF192 / Honda Gasoline Engine GX390
Vibration Control	Hydraulic Vibration	Power	10.9HP / 13HP
Static Linear Load	56N/cm	Steel Wheel Size	Φ540mm X800mmX2
Nominal Amplitude	0.5mm	Dimension	2000X850X2180mmmm
Vibration Frequency	70Hz	Working Weight	1000kg
Exciting Force	28KN	Starting Mode	Hand and Electric



## FYL-880 Road Roller

1000kg Road Roller



Air-cooled diesel engine



Honda gasoline engine



Water-cooled diesel engine



Imported variable piston pump



Hydraulic motor,  
double drum driving



Hydraulic steering



Operation panel



Electric water spraying



Working lamps in the front and rear

### Technical Specification

Model	FYL-880				
Walk Speed	0-5km/h	Water Tank	60L		
Gradeability	30%	Hydraulic Oil Tank	35L		
Drive Type	Hydraulic Transmission	Engine Model	Air Cooled Diesel engine CF186 / Water Cooled Diesel Engine 90N / Honda Gasoline Engine GX390		
Vibration Control	Electromagnetic Control	Power	9HP	9HP	13HP
Static Linear Load	20/55N/cm	Steel Wheel Size	Φ540mm X740mm / Φ540mm X800mm		
Nominal Amplitude	0.6mm	Dimension	2100X1000X1650mm		
Vibration Frequency	70Hz	Working Weight	1000kg		
Exciting Force	25KN	Starting Mode	Hand and Electric		



### FYL-860 Road Roller

800kg Road Roller



### FYL-855 Road Roller

### FYL-850 Road Roller



HONDA gasoline engine is optional

700kg Road Roller

#### Technical Specification

Model	FYL-860	FYL-855	FYL-850
Walk Speed	0-5km/h	0-5km/h	0-5km/h
Gradeability	30%	30%	30%
Drive Type	Full hydraulic Drive	Full hydraulic Drive	Hydrostatic Drive
Vibration Control	Electromagnetic Clutch	Electromagnetic Clutch	Electromagnetic Clutch
Static Linear Load	55N/cm	55N/cm	55N/cm
Nominal Amplitude	0.5mm	0.5mm	0.5mm
Vibration Frequency	70HZ	70HZ	70HZ
Exciting Force	20KN	20KN	20KN
Water Tank	20L	20L	15L
Hydraulic Oil Tank	19L	13L	5L
Engine Model	Diesel CF186/ Honda Gasoline GX390	Diesel CF178/ Honda GasolineGX270	Diesel CF178/ Honda GasolineGX270
Power	9HP/13HP	5.4HP/9HP	5.4HP/9HP
Steel Wheel Size	φ540X740mm φ425X675mm	φ540X740mm φ425X500mm	φ560X700mm φ425X500mm
Dimension	1724X860X2056mm	1584X862X1236mm	1695X887X1068mm
Working Weight	800kg	700kg	700kg
Starting Mode	Hand/Electric	Hand/Electric	Hand/Electric



FYL-800 Road Roller 800kg Road Roller



Air-cooled diesel engine



HONDA gasoline engine



Water-cooled diesel engine



Imported variable piston pump



Hydraulic motor, double drum driving



Hydraulic steering



Hydraulic steering button



Vibration and lamp switch



Safety protection rod

Technical Specification

Model	FYL-800				
Walk Speed	0-4km/h	Water Tank	26L		
Gradeability	30%	Hydraulic Oil Tank	20L		
Drive type	Hydraulic Transmission	Engine Model	Air Cooled Diesel Engine CF186	Water Cooled Diesel Engine 90N	Honda Gasoline Engine GX390
Vibration Control	Electromagnetic Clutch	Power	9HP	9HP	13HP
Static Linear Load	75N/cm	Steel Wheel Size	Φ350X630mmX2		
Nominal Amplitude	0.5mm	Dimension	1290X680X1730mm		
Vibration Frequency	70HZ	Working Weight	800kg		
Exciting Force	20KN	Starting Mode	Hand and Electric		



## FYL-800P Road Roller



Air-cooled diesel engine



Hydraulic motor, double drum driving



Hydraulic steering

### Technical Specification

Model	FYL-800P		
Walk Speed	0-4km/h	Water Tank	26L
Gradeability	30%	Hydraulic Oil Tank	20L
Drive type	Hydraulic Transmission	Engine Model	Air Cooled Diesel Engine CF186
Vibration Control	Electromagnetic Clutch	Power	9HP
Static Linear Load	75N/cm	Steel Wheel Size	Φ350X630mmX2
Nominal Amplitude	0.5mm	Dimension	1290X680X1730mm
Vibration Frequency	70HZ	Working Weight	800kg
Exciting Force	20KN	Starting Mode	Hand and Electric

## FYL-R800T Remote Control Road Roller



Remote-control unit



Air-cooled diesel engine



HONDA gasoline engine



Imported variable piston pump

### Technical Specification

Model	FYL-R800T		
Walk speed	0-4km/h	Hydraulic oil tank	20L
Climbing capacity	30%	Engine type	Air cooled diesel engine CF186
Drive type	hydraulic type	Power	9HP
Vibration Control	Electromagnetic Clutch	Starting Mode	Hand or Electric or Remote Control
Static linear load	55N/cm	Steel Wheel Size	Φ350X635mmX2
Vibration frequency	70HZ	Net weight	800kg
Exciting force	20KN		
Water tank	26L		



## FYL-S700 Road Roller



Imported hydrostatic pump  
infinitely variable speed



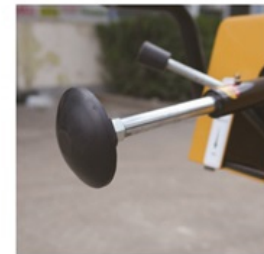
Vibration and Lamp Button



Forward/Backward handle



With lamp, can work at night



Safety protection rod



Double drum water spraying  
scraper cleaning

### Technical Specification

Model	FYL-S700	
Walk Speed	0-5km/h	
Gradeability	30%	
Drive Type	Hydrostatic Transmission	
Vibration Control	Electromagnetic Clutch	
Static Linear Load	40N/cm	
Nominal Amplitude	0.7mm	
Vibration Frequency	70HZ	
Exciting Force	20KN	
Water Tank	50L	
Hydraulic Oil Tank	0.3L	
Engine Model	Air Cooled Diesel Engine CF178	Honda Gasoline Engine GX270
Power	5.4HP	9HP
Starting Mode	Hand and Electric	
Steel Wheel Size	φ450X600mmX2	
Dimension	2400x800x1800mm	
Net Weight	550kg	

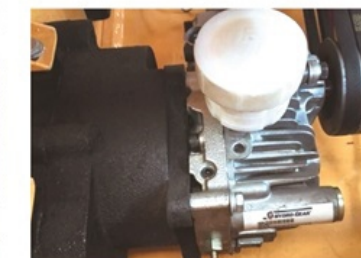
## FYLJ-S600C Road Roller

## FYLJ-S600P

**New Design**



Air-cooled diesel engine



Original imported hydraulic pump  
variable speed



Forward and backward  
operation handle

### Technical Specification

Model	FYLJ-S600C
Walk Speed	0-5km/h
Gradeability	30%
Drive Type	Hydrostatic Drive, Infinitely Variable Speed
Vibration Control	Electromagnetic Clutch
Static Linear Load	40N/cm
Nominal Amplitude	0.7mm
Vibration Frequency	70Hz
Exciting Force	20KN
Water Tank	50L
Hydraulic Oil Tank	0.3L
Engine Model	Diesel CF178/ HONDA Gasoline GX270
Power	5.4HP/ 9HP
Starting Mode	Hand and Electric
Steel Wheel Size	φ450X600mmX2
Dimension	2400x720x1800mm
Net Weight	550kg



## FYL-S600JH Road Roller



### Features

- ✧ Adopts imported full hydraulic pump.
- ✧ Infinitely variable speed.
- ✧ Uses electromagnetic clutch, the road roller vibrating by button control, easy to operate.
- ✧ With safety protection rod.
- ✧ Double drums driving and vibrating, strong vibration capacity.
- ✧ Can choose to use famous diesel engine or Honda gasoline engine.

### Technical Specification

Model	FYL-S600JH
Walk Speed	0-5km/h
Gradeability	40%
Drive Type	Full hydraulic, Infinitely Variable Speed
Vibration Control	Electromagnetic Clutch
Static Linear Load	90N/cm
Nominal Amplitude	0.5mm
Vibration Frequency	65HZ
Exciting Force	20KN
Water Tank	23L
Hydraulic Oil Tank	20L
Engine Model	Diesel CF186/ HONDA Gasoline GX270
Power	9HP/ 9HP
Starting Mode	Hand and Electric
Steel Wheel Size	φ450X600mmX2
Dimension	2400x800x1800mm
Net Weight	550kg



Imported hydraulic pump, infinitely variable speed



Forward/Backward handle & vibration button



Safety Protection Rod

## FYL-S600 Road Roller

Double Drums Driving and Vibrating



### Technical Specification

Model	FYL-S600		
Walk Speed	0-4km/h		
Gradeability	30%		
Drive Type	Hydraulic Station		
Vibration Control	Automatic Clutch		
Static Linear Load	53N/cm		
Nominal Amplitude	0.5mm		
Vibration Frequency	70HZ		
Exciting Force	20KN		
Water Tank	20L		
Hydraulic Oil Tank	21L		
Engine Model	Air Cooled Diesel Engine CF178	Water Cooled Diesel Engine R180	HONDA Gasoline Engine GX270
Power	5.4HP	7.7HP	9HP
Starting Mode	Hand and Electric	Hand and Electric	Hand
Steel Wheel Size	φ425X595mmX2		
Dimension	1250X795X1550mm		
Net Weight	550kg		



## FYL-750 Road Roller



Hydraulic motor driving



Safety protection rod



Vibration button

### Technical Specification

Model	FYL-750		
Walk Speed	0-4.5km/h	Water Tank	20L
Gradeability	32%	Hydraulic Oil Tank	15L
Drive Type	Hydraulic Transmission	Engine Model	Air Cooled Diesel CF178/ Honda Gasoline GX270
Vibration Control	Electromagnetic Clutch	Power	5.4HP/ 9HP
Static Linear Load	66N/cm	Steel Wheel Size	φ540X740mm
Nominal Amplitude	0.5mm	Dimension	2204X863X1179mm
Vibration Frequency	70HZ	Net Weight	500kg
Exciting Force	20KN	Starting Mode	Electric

## FYL-700 Road Roller



Honda gasoline engine

Air-cooled diesel engine

### Technical Specification

Model	FYL-700
Walk Speed	0-4km/h
Gradeability	30%
Drive Type	Hydraulic Station
Vibration Control	Automatic Clutch
Static Linear Load	50N/cm
Nominal Amplitude	0.5mm
Vibration Frequency	70HZ
Exciting Force	20KN
Water Tank	20L
Hydraulic Oil Tank	16L
Engine Model	Air Cooled Diesel CF178/ Honda Gasoline GX270
Power	5.4HP/ 9HP
Steel Wheel Size	φ560X690mm
Dimension	1250X1150X1350mm
Net Weight	500kg
Starting Mode	Hand and Electric / Hand

## FYL-600 Road Roller



### Technical Specification

Model	FYL-600
Walk Speed	0-3km/h
Gradeability	30%
Drive Type	Hydraulic Station
Vibration Control	Automatic Clutch
Static Linear Load	40N/cm
Nominal Amplitude	0.6mm
Vibration Frequency	70HZ
Exciting Force	15KN
Water Tank	17L
Hydraulic Oil Tank	19L
Engine Model	Air Cooled Diesel CF173/ HONDA Gasoline GX160
Power	5.5HP/ 5.5HP
Steel Wheel Size	φ425X595mm
Dimension	1140X774X1145mm
Net Weight	325kg
Starting Mode	Hand and Electric/ Hand



## FYL-D600 Road Roller

Original Imported Hydraulic Unit,  
Variable Speed



### Technical Specification

Model	FYL-D600
Walk Speed	0-4km/h
Gradeability	30%
Drive Type	Hydrostatic Drive
Vibration Control	Automatic Clutch
Static Linear Load	45N/cm
Nominal Amplitude	0.6mm
Vibration Frequency	70HZ
Exciting Force	15KN
Water Tank	18L
Hydraulic Oil Tank	0.3L
Engine Model	Air Cooled Diesel CF173/ HONDA Gasoline GX160
Power	5.5HP/ 5.5HP
Steel Wheel Size	φ425X595mm
Dimension	1140X774X1145mm
Net Weight	285kg
Starting Mode	Hand and Electric/ Hand

## FYL-450 Road Roller

Briggs & Stratton Engine



### Technical Specification

Model	FYL-450
Walk Speed	0-3km/h
Gradeability	30%
Drive Type	Hydraulic Station
Vibration Control	Automatic Clutch
Static Linear Load	40N/cm
Nominal Amplitude	0.6mm
Vibration Frequency	70HZ
Exciting Force	15KN
Water Tank	0L
Hydraulic Oil Tank	16L
Engine Model	Honda Gasoline GX160
Power	5.5HP
Steel Wheel Size	φ425X445mm
Dimension	1140X774X1145mm
Net Weight	200kg
Starting Mode	Hand

## Tamping Rammer



Diesel Engine

### Technical Specification

Model	FYCH-80	FYCH-80G	FYCH-80D
Engine	Honda Gasoline Engine GX160/Robin EY20/ Loncin G200		Hairun Diesel Engine 170
Power	5.5HP		5.5HP
Jumping Height	45-70mm	60-80mm	45-65mm
Tamping Frequency	300-600/min	500-700/min	400-600/min
Plate Size	275x330mm	275x330mm	275x330mm
Tamping Power	15KN	15KN	15KN
Weight	80kg	80kg	90kg
Packing Size	950x500x620mm	950x500x620mm	950x500x620mm

## Plate Compactor



### Technical Specification

Model	FPB-S30C	FPB-S30G	FPB-20
Engine	Air Cooled Diesel CF178	Honda Gasoline GX270	Honda Gasoline GX160
Power	5.4HP	9HP	5.5HP
Working Area	500X690mm	500X690mm	430X550mm
Walking	Reversible	Reversible	Forward
Vibrating Force	30KN	30KN	20KN
Frequency	70HZ	70HZ	70HZ
Gradeability	25%	25%	25%
Starting Mode	Hand and Electric	Hand	Hand
Weight	175kg	175kg	85kg
Packing Size	780X560X1060mm	780X560X1060mm	760X520X700mm



## 9m Trailer Light Tower FZMDTC-1000B



3 Cylinder water cooled diesel generator



Metal halide lamp



High brightness LED



Operation panel



Manual lifting



Foldable mast when transport

※FZMDTC-1000B mobile trailer light tower has manual lifting mast, easy to elevate, can choose metal halide lamps or LED, making it suitable for a wide variety of applications. This unit is compact in size, making it easy to transport to the job site and to maneuver into position to fit your needs.

### Technical Specification

Model	FZMDTC-1000B	
Lamp×Quantity	400W×4 LED	1000W×4 Metal Halide Lamp
Engine	Quanchai QC385D	
Type	Water Cooled Diesel Engine, Three Cylinder	
Power	8.4kW	
Fuel Tank	100L	
Voltage	220V, 50Hz / 220V, 60Hz	
Frame	3 Sections Elevating	
Elevating Height	9000mm	
Walk Type	Trailer Type	
Weight	1000kg	



## Solar Mobile Light Tower FZMT-S1600



Operation panel



Battery



High brightness LED



Foldable solar panel



Hand elevating handle



Adjustable support legs  
steady and durable

✧ We have developed a new product called the Solar Light Tower, which is designed with the concept of energy saving and environmental protection. It can be deployed in remote areas for long periods and is self-powered by the sun. Which are charged automatically via adjustable solar panels, operate clean, silently and efficiently, the best choice for applications where noises is an issue.

### Technical Specification

Model	FZMT-S1600
Solar Plate Power	400W
Voltage	32.4V
Electric Current	11.05A
Solar Plate Quantity	4 pcs
Rated Working Temperature	44°C
Battery	12V, 200Ah Rechargeable battery
Battery Quantity	4 pcs
Lamp Frame	7 sections elevating
Elevating height	2500-9000mm
Lifting Type	manual
Lamp	200W LED X4
Walk Type	Trailer type



### 7m Trailer Light Tower FZMTC-1000B



Diesel generator/gasoline generator



Metal halide lamp



LED



Operation panel



Waterproof switch box



Manual lifting/electric lifting

※FZMTC-1000B mobile trailer light tower has manual lifting mast , easy to elevate, can choose metal halide lamps or LED, making it suitable for a wide variety of applications. This unit is compact in size, making it easy to transport to the job site and to maneuver into position to fit your needs.

#### Technical Specification

Model	FZMTC-1000B	
Lamp X Quantity	400W X4 LED	1000W X4 Metal Halide Lamp
Engine	Diesel Generator/ Gasoline Generator	
Power	4.5kW	6.5kW
Fuel Tank	48L	
Voltage	220V,50Hz/ 220V,60Hz	
Frame	7 Sections Elevating	
Elevating Height	7000mm	
Walk Type	Trailer Type	
Weight	420kg	



## 5m Mobile Light Tower



### Technical Specification

Model	FZM-1000B	FZM-Q1000
Lamp x	Metal Halide Lamp	1000Wx4
Quantity	LED	400Wx4
Generator Set	Gasoline Generator/ Diesel Generator	
Power	4.5kW/6.5KW	4.5kW
Fuel Tank Capacity	12.5L	12.5L
Elevating Hegith	1800mm ~5000mm	
Lamp Frame	4 sections elevating	
Walk Type	Hand Push	
Anti-slope	<10°	
Anti-wind	<6°	
Weight	230kg	210kg



Metal halide lamp



LED



Anti glare ball lamp



Gasoline generator



Open shelf diesel generator



Silent type diesel generator



Manual lifting



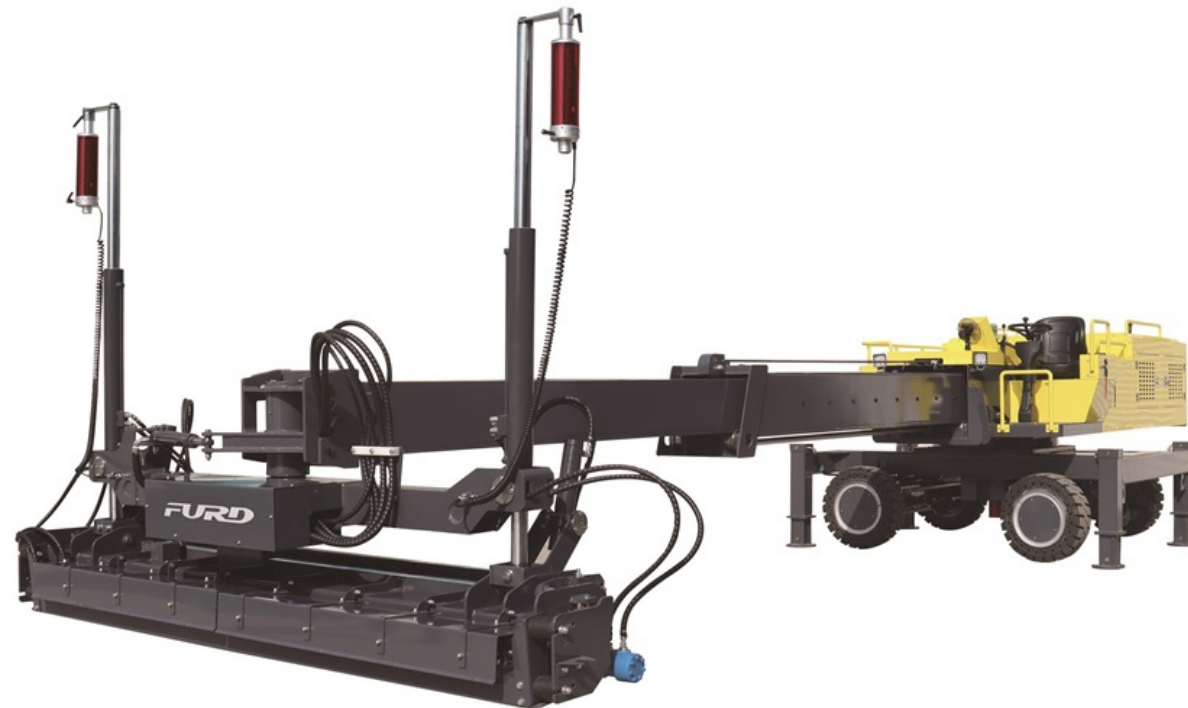
Waterproof switch box



Prevent fall institution



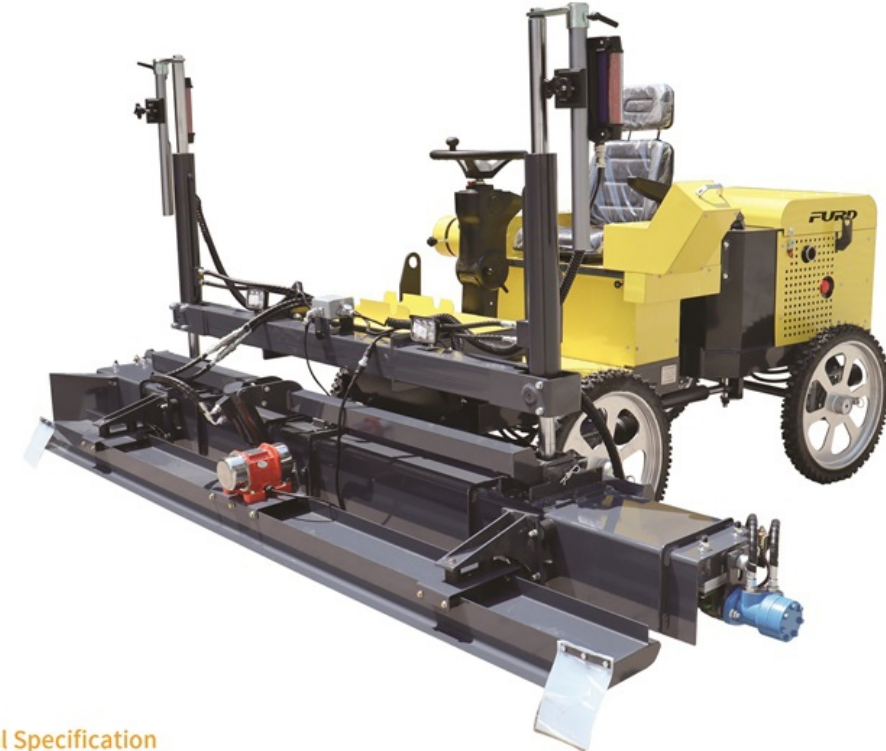
## Boom Laser Screed Machine FJZP-200



### Technical Specification

Engine		Laser Control System	
Model	Yanmar 4TNV94L	Control Mode	Microcomputer laser scanning
Type	Diesengine,4 strokewater cooling, four-cylinder	Controll Effect	Plane,slope or double slope
Power	36.5KW/50HP	Power	Hydraulic motor drive
Fuel Capacity	110L	Laser System	Topcon EV2S emitter,Topcon LS200W receivers
Fuel Consumption	5L/h		
Walk		Leveling System	
Drive	Hydraulic 4WD	Texture of Material	Magnesium alloy
Steering Mode	Front Wheel,Four-Wheel,Crab Type	Leveling Width	2955mm
Wheel	Anti-Skid Solid Tire	Paving Method	Dragon-twisting paving
Outrigger	Self-Leveling of Four Legs	Jilong Power	Hydraulic motor
Travel Speed	0-6km/h	Exciting Force	3000N
Working Speed	20m/min	Vibration Frequency	60Hz
Seat Position	Central Type	Swing Angle	±45°
Forward and Backward	Wye gear, stepless speed change	Leveling Control of Leveling Head	Proportional control
To turn to	Steering wheel	Flathead Height	500mm
		Control Accuracy	SIZE ±1.5mm
Telescopic Boom		Size and Weight	
Length	6000mm	Transport Dimensions	7300x2400x2300mm
Control Mode	Handle Control.Stepless Speed Change	Weight	6500kg

## Ride On Laser Screed Machine FJZP-220



### Technical Specification

Model	FJZP-220
Engine Model	Honda Gasoline Engine GX690
Power	17.6KW
Oil Volume	1.8L
Gasoline Capacity	37L
Fuel Consumption	3-4L/h
Laser Emitter	Topcon H5A emitter
Laser Receiver	Leica MS720 receivers
Laser Control System	Danfoss Laser Control System
Control Effect of Laser System	Plane,Slope
Laser System Control Mode	Automatic Control of Laser Micro-System to Realize Automatic Leveling
Suspension Mode	Fixed
Vibration Plate Width	2525mm
Leveling Thickness	680 tires 50-300 mm
Exciting Force	2000N
Vibration Motor Speed	3600rpm
Travel Drive	Low-Speed High-Torque Reducer+Hydraulic Drive Motor
Intelligent Travel Control System	One-Button Cruise Control
Walking Speed	0-55m/min
Working Speed	4m - 20m/min (Adjustable Speed)
Paving Method	Hydraulic Auger Paving
Travel Tire	Solid Anti-Skid and Stab-Resistant Narrow Tire
Fuselage Size	3250x2850x1320mm
Fuselage Weight	900kg



## Walk Behind Laser Screed Machine FDJP-24D



### Technical Specification

Model	FDJP-24D
Engine Model	Honda Gasoline Generator
Power	3.0KW
Fuel Volume	17L(18 Hours for Construction)
Fuel Consumption	0.8-1.3L/h
Laser Emitter	Topcon H5A emitter
Laser Receiver	Leica MS720 receivers
Laser Control System	Danfoss Laser Control System
Control Effect of Laser System	Plane
Laser System Control Mode	Automatic Control of Laser Micro-System to Realize Automatic Leveling
Suspension Mode	Flat Head Independent Suspension System (Can Maintain Fuselage Balance in Complex Engineering)
Vibration Plate Width	2525mm
Leveling Thickness	Standard 680 tire 50-250mm
Exciting Force	2000N
Vibration Motor Speed	3600rpm
Travel Drive	Servo Drive Motor
Walking Mode	Automatic Travel of Electric Control Servo System
Walking Speed	0-28m/min
Working Speed	4m-20m/min
Tail Wheel Control Mode	Manual Lifting
Travel Tire	Solid Anti-Skid and Stab-Resistant Narrow Tire/Optional (Inflatable Wide Tire)
Fuselage Size	3200x2700x1120mm
Fuselage Weight	400kg

## Concrete Truss Screed



Workshop



Surface construction



Workshop



Bridge construction site

### Technical Specification

Model	FZP-55	FZP-90	FZP-130
Engine Model	Honda GX160/ Electric Motor	Honda GX270/ Electric Motor	Honda GX390/ Electric Motor
Power	5.5HP/ 4kW	9HP/ 5.5kW	13HP/ 7.5kW
Working Width	4m-7m	8m-11m	12m-16m
Working Depth	260mm	260mm	260mm
Vibration Frequency	70Hz	70Hz	70Hz
Standard Section	1000mm/2000mm	1000mm/2000mm	1000mm/2000mm



## Surface Finishing Machine



Used for vibrating and leveling on small concrete surface area.

✧With famous gasoline engine,superior performance.

✧Light and flexible,easy to operate.

### Technical Specification

Model	FED-35
Engine	Honda GX35 Gasoline Engine
Power	1.6HP
Working Width	1-3m
Weight	25kg

## Concrete Leveling Machine



### Technical Specification

Model	FCJP-30
Engine	Honda GX160 Gasoline Engine
Power	5.5HP
Length	1400mm
Single Drum Length	350mm
Total Drum Length	1000mm
Stretch Length	1200mm
Driving Type	Gear Transmission

## Concrete Vibrator



It is used for vibrating concrete in beam column,road and prefabricate part.

✧HONDA petrol engine,famous brand, quality assurance,excellent performance and easy to start;  
✧High vibrating frequency,good vibrating performance;  
✧No power limit,easy to move.

### Technical Specification

Model	FZB-55
Power	5.5HP
Vibrating Frequency	60HZ
Poker Head Diameter	Φ50mm
Weight	25kg

## Concrete Power Trowel



FMG-24



FMG-30/36



FMG-46



FMG-S30



FMG-S36

### Technical Specification

Model	FMG-24	FMG-30/FMG-36	FMG-46	FMG-S30	FMG-S36
Engine	Honda GX160	Honda GX160	Honda GX270	Honda GX390	Honda GX690
Power	5.5HP	5.5HP	9.0HP	13.0HP	24HP
Working Diameter	φ60cm	φ80cm/100cm	φ120cm	φ80cm×2	φ100cm×2
Net Weight	55kg	100kg	110kg	230kg	330kg
Package Size	700×200×690mm	1150×1150×690mm	1500×1500×850mm	1690×860×1190mm	2010×1150×1100mm



### ◆ Road Scarifying Machine



#### Technical Specification

Model	FYCB-250	FYCB-250D	FYCB-300
Power	13HP	7.5KW	21HP
Milling Width	250mm	250mm	300mm
Milling Depth	5mm	5mm	6mm
Blade Number	66 PCS	66 PCS	66 PCS
Weight	175kg	200kg	240kg

### ◆ Road Scarifying Machine



#### Technical Specification

Model	FYCB-500	FYCB-500D
Model	Diesel CF25 17KW	15KW(Three-phase AC motor)
Milling Depth	0-10mm(Adjustable)	0-10mm(Adjustable)
Control Mode	Electric Control Lifting	Electric Control Lifting
Walking Mode	Hydraulic Infinitely Variable Speed	Electric Infinitely Variable Speed
Walking Speed	0-30m/min	0-12m/min
Working Efficiency	230m <sup>2</sup> /h	230m <sup>2</sup> /h
Knife Hub Width	500mm	500mm
Blade Quantity	270pcs	270pcs
Weight	380kg	260kg
Overall Size	1600×830×950mm	1350×860×830mm



## FURD ROAD CUTTER

### Road Cutter



Air-cooled diesel engine



Diamond cutting blades



Precision hand control

#### Technical Specification

Model	FQG-400	FQG-500	FQG-600
Engine	Honda GX270	Honda GX390/ Diesel /Engine CF186	Loncin 2V78-1 gasoline engine
Power	9HP	13HP/9HP	22HP
Blade Diameter	Φ400mm	Φ500mm	Φ600mm
Cutting Depth	150mm	170mm	210mm to 250mm
Water Tank Volume	40L	45L	50L
Starting Mode	Hand	Hand/Electric	Electric
Weight	130kg	145kg	280kg

## ROAD REPAIR MACHINE FURD

### Grooving Machine



#### Technical Specification

Model	FKC-180
Engine	Honda Gasoline GX390
Power	13HP
Blade Diameter	Φ180mm
Grooving Depth	0-35mm
Weight	80kg



#### Technical Specification

Model	FKC-300
Engine	Honda Gasoline GX630
Power	20HP
Blade Diameter	Φ180mm/ Φ150mm
Grooving Depth	≤35mm
Weight	240kg

### Road Blower



#### Technical Specification

Model	FCF-360	FCF-450
Engine	Honda Gasoline GX160	Honda Gasoline GX270
Fan Blade Diameter	360mm	450mm
Rotate Speed	3600rpm	3600rpm
Air Volume	4800m³/h	6800m³/h
Weight	65kg	80kg

### Asphalt Spreading Machine



#### Technical Specification

Model	FAS-55	Fuel tank	3.1L
Engine	Honda GX160	Spraying speed	15L/min
Power	5.5 hp	Spraying pressure	1 Mpa
Start type	Hand start	Nozzle number	1
Hydraulic pump	Gear pump	Machine size	990*520*790mm



## Asphalt Crack Sealing Machine



FGF-60

Used for sealing concrete and asphalt road crack.  
 ※ Famous brand generator, stable performance;  
 ※ Liquefied gas or gasoline generator heating, practical and easy to operate;  
 ※ Large asphalt tank;  
 ※ All the working process heating, avoid blocking.

### Technical Specification

Model	FGF-60
Generator Model	YAMAHA ET-1
Material Tank Volume	60L
Walking Mode	Hand Push
Mixing Mode	By Hand
Fuel Type	LPG
Heating Medium	Conduction Oil
Weight	165kg



FGF-120

### Technical Specification

Model	FGF-120
Generator Model	Honda Gasoline Generator ER2500
Material Tank Volume	120L
Walking Mode	Hand Pull or Trailer Type
Mixing Mode	Electric Motor Mixing
Fuel Type	Diesel Burner
Heating Medium	Conduction Oil
Material Hose Length	5m
Weight	420kg
Dimension	2150x1250x1460mm



FGF-120Z For Electric Vehicles

### Technical Specification

Model	FGF-120Z
Generator Model	Honda Gasoline Generator ER2500
Material Tank Volume	120L
Walking Mode	Driving Type
Mixing Mode	Electric Motor Mixing
Fuel Type	Diesel Burner
Heating Medium	Conduction Oil
Material Hose Length	5m
Weight	750kg
Dimension	3000x1100x1750mm

## Asphalt Crack Sealing Machine



FGF-200



Adopts honda generator, good performance



Uses italy famous diesel burner heating, easy and convenient



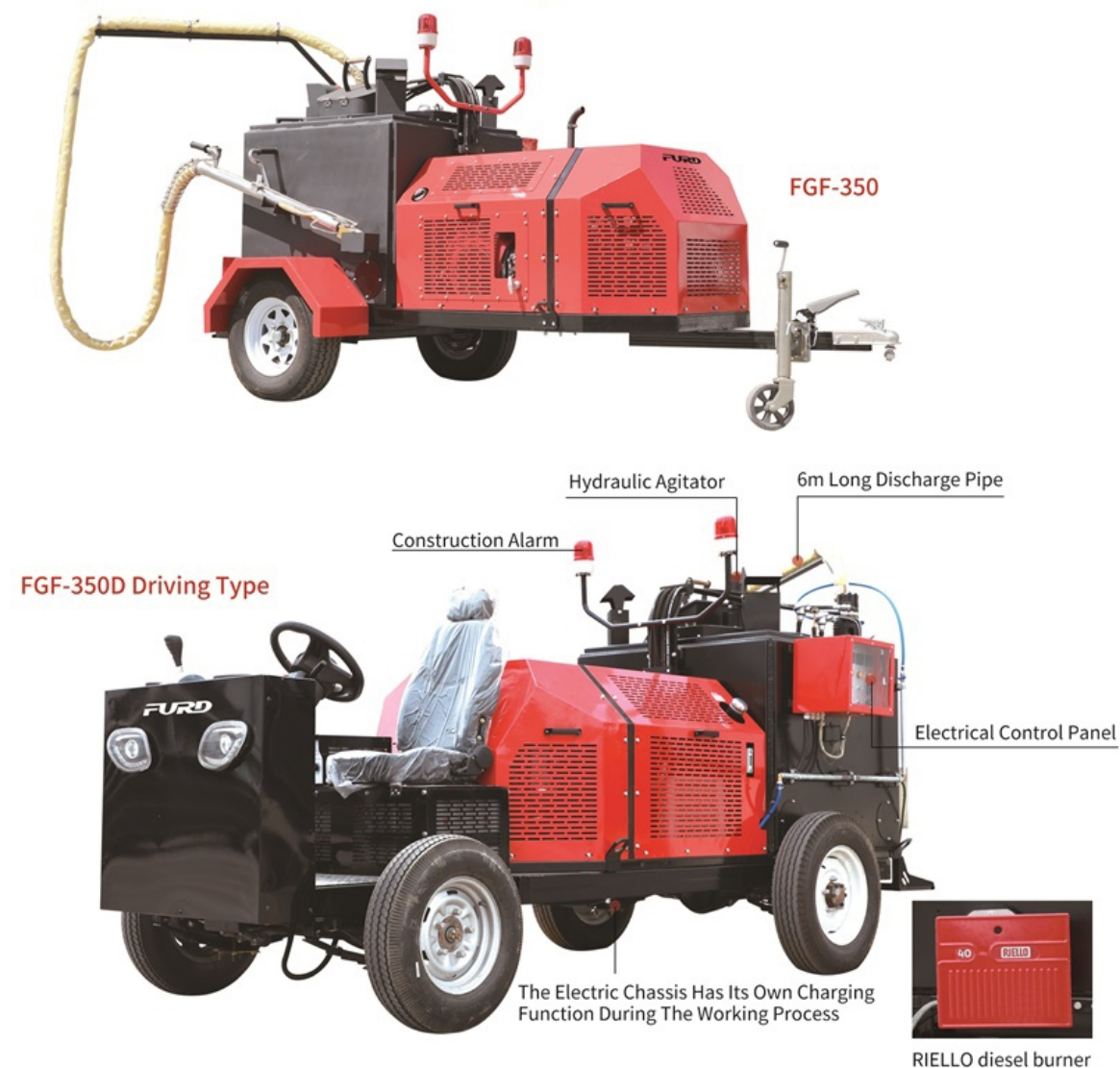
Stirring is driven by motor, speed up melting

### Technical Specification

Model	FGF-200
Engine Model	HONDA Gasoline Generator EG4000
Power	3.6kw
Material Tank Volume	200L
Walking Type	Trailer Type
Fuel Tank	21L
Burner Power	3.2kw
Heating Temperature	180°C-220°C (Adjustable)
Asphalt Pump Flow	0-32L/h (Adjustable)
Material Hose Length	6m
Weight	500kg



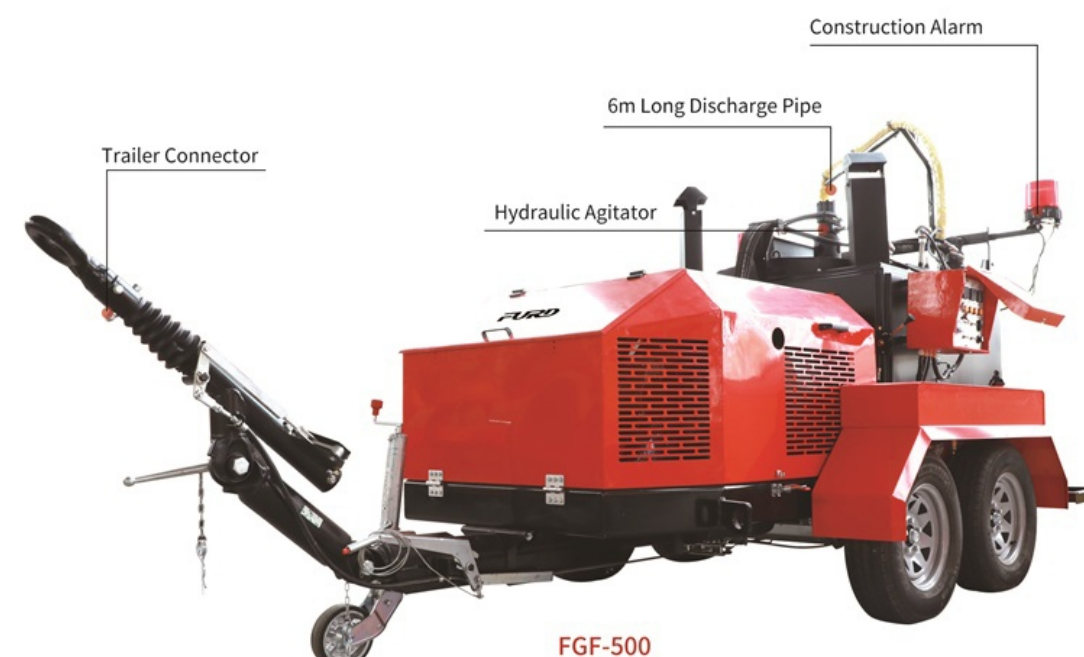
## Asphalt Crack Sealing Machine



### Technical Specification

Model	FGF-350	FGF-350D(Self-Propelled Type)
Engine Model	(HONDA Gasoline)GX630	(HONDA Gasoline)GX630
Power	15.5KW	15.5KW
Material Tank Volume	350L	350L
Walking Type	Trailer type	Self-Propelled Type
Fuel Tank	40L	40L
Burner power	54-120kw	54-120kw
Heating Temperature	80°C-220°C (Adjustable)	80°C-220°C (Adjustable)
Asphalt Pump Flow	0-24L/h (Adjustable)	0-24L/h (Adjustable)
Material Hose Length	6m	6m
Weight	2100kg	2400kg

## Asphalt Crack Sealing Machine



Imported perkins diesel engine



RIELLO diesel burner



Operation panel

### Technical Specification

Model	FGF-500
Engine Model	(Perkins Diesel) 403D-11
Power	18.4KW
Material Tank Volume	500L
Walking Mode	Trailer Type
Fuel Tank	50L
Burner Power	22.2-103kw
Generator Power	3kw
Heating Temperature	80-220°C Adjustable
Asphalt Pump Flow	0-24L/min Adjustable
Hydraulic Oil Tank	50L



### -Thermoplastic Road Marking Machine



#### Technical Specification

Model	FHX-36	FHX-46
Marking Width	Standard Size: 150mm, can choose 100mm, 200mm, 300mm, 400mm	
Spraying Volume	100kg/time	
Spraying Thickness	1.0-3.0mm	
Spraying Speed	1.5km/h	
Heating Temperature	180°C~210°C	
Heating Mode	liquefied Gas	
Weight	135kg	
Remark	Need Use With Pre heater	Use Own Heating System

### -Thermoplastic Convex Road Marking Machine



#### Technical Specification

Model	FHX-56
Engine	Honda Gasoline GX160
Material Tank Volume	120L
Glass Bead Volume	10kg
Marking Width	Standard Size:150mm, can choose 200mm, 300mm
Spraying Thickness	15cm
Walking Speed	0-20km/h
Marking Speed	500-800m/h
Bump Height	0-10mm
Max Slope	15 degree
Heating Method	LPG
Size	1360*900*1100mm
Weight	265kg

### -Linedriver



#### Technical Specification

Model	FHX-66
Engine	Honda Gasoline GX160
Power	5.5HP
Size	1500x1200x700mm
Weight	80kg
Hydraulic Motor Brand	Danfoss
Remark	Cooperate with FHX-36 Road Marking Machine

### -Single Cylinder Thermoplastic Pre-heater



#### Technical Specification

Model	FHX-T300
Outer Dimensions	1200x730x1630mm
Capacity(Melted Paint)	300kg
Engine	6.6HP Diesel Engine
Stove Material	Alloy
Fuel	LPG

### -Double Cylinder Thermoplastic Pre-heater



#### Technical Specification

Model	FHX-T1200
Outer Dimensions	1900x1680x1630mm
Capacity(Melted Paint)	2X600kg
Engine	15HP Diesel Engine
Stove Material	Alloy
Fuel	LPG

### -Cold Spraying Road Marking Machine



#### Technical Specification

Model	FHX-26	FHX-26B
Quantity of Gun	1	2
Marking Width	10~400mm (Adjustable)	
Spraying Thickness	0.2-0.4mm	
Paint Pump Maximum Flow	5L/min	
Max Output Pressure	250Bar	
Nozzle Standard Configuration	0.019"	
Max.Nozzle Size	0.025"	
High Pressure Pipe Length	15m	

### -Road Marking Line Remover



#### Technical Specification

Model	FCX-200
Engine	Honda Gasoline Engine GX270
Power	9HP
Rotate Speed	3600r/min
Hub Diameter	130mm
Blade Quantity	84pcs
Blade Shaft Quantity	4pcs
Elevating Control Way	hand
Milling Width	200mm
Milling Depth	0-4mm
Walking Type	Hand
Size	960x600x1000mm
Weight	120kg



## Hydraulic Power Unit (Single Circuit)



FHP-30D



FHP-30



FHP-40D

### Gasoline Engine Power Unit

#### Technical Specification

Model	FHP-30	FHP-40
Engine	Briggs & Stratton Gasoline Engine XR420CC	Briggs & Stratton Gasoline Engine XR627CC
Power	13.5HP	23HP
Fuel Tank	6.6L	20L
Max Hydraulic Flow	30L/min	40L/min
Max Pressure	155 bar	155 bar
Hydraulic Oil Tank	13L	13L
Walking Type	Hand Push	Hand Push
Size	850x560x720mm	1000x660x780mm
Weight	110kg	120kg

### Diesel Engine Power Unit

#### Technical Specification

Model	FHP-30D	FHP-40D
Engine	Changfa Diesel Engine CF192F	Koop Diesel Engine KD292F
Power	11HP	20.5HP
Fuel Tank	5.5L	20L
Max Hydraulic Flow	30L/min	40L/min
Max Pressure	155 bar	155 bar
Hydraulic Oil Tank	13L	13L
Walking Type	Hand Push	Hand Push
Size	850x560x720mm	1100x690x850mm
Weight	110kg	180kg

## Hydraulic Power Unit (Double Circuit)



FHP-60Q



FHP-80Q

#### Technical Specification

Model	FHP-60Q	FHP-80Q
Engine	B&S Gasoline Engine	Rato Gasoline Engine
Power	27HP	33.5HP
Hydraulic Oil Tank Capacity	18L	30L
Fuel Tank Capacity	24L	30L
Max Hydraulic Flow	2x30L/min	2x40L/min
Max Pressure	155bar	155bar
Walking Type	Hand Push	Hand Push
Weight	168kg	260kg

## -Hydraulic Tools



Hydraulic Breaker



Hydraulic Circular Saw



Hydraulic Trash Pump

## Gasoline Engine Road Breaker



#### Technical Specification

Model	FPC-28
Tamping Frequency	1300/min
Tamping Power	55J
Clutch Rotate Speed	2450r/min
Oil Tank Capacity	1.2L
Working Rotate Speed	4300r/min
Weight	28kg
Packing Size	810x380x280mm



## Mini Excavator



### Technical Specification

Model	FWJ-800
Weight	800kg
Engine	Koop Diesel KD192F
Rated power	8.6kw
Digging bucket capacity	0.02m <sup>3</sup>
Max digging radius	2400mm
Max digging depth	1220mm
Max digging height	2200mm
Walking speed	0-3km/h
Gradeability	35°
Wheelbase	650mm
Track length	1140mm
Track width	150mm



### Technical Specification

Model	FWJ-1000
Weight	1000kg
Engine	Koop Diesel KD192F
Rated power	8.6kw
Digging bucket capacity	0.025m <sup>3</sup>
Max digging radius	2500mm
Max digging depth	1450mm
Max digging height	2580mm
Walking speed	0-3.5km/h
Gradeability	35°
Wheelbase	770mm
Track length	1200mm
Track width	180mm

## Mini Excavator



### Technical Specification

Model	FWJ-1500
Weight	1500kg
Engine	Koop Diesel Engine KD292F
Rated power	14Kw
Digging bucket capacity	0.025m <sup>3</sup>
Max digging radius	2500mm
Max digging depth	1450mm
Max digging height	2580mm
Walking speed	0-3.5km/h
Gradeability	35°
Wheelbase	900mm
Track length	1350mm
Track width	180mm

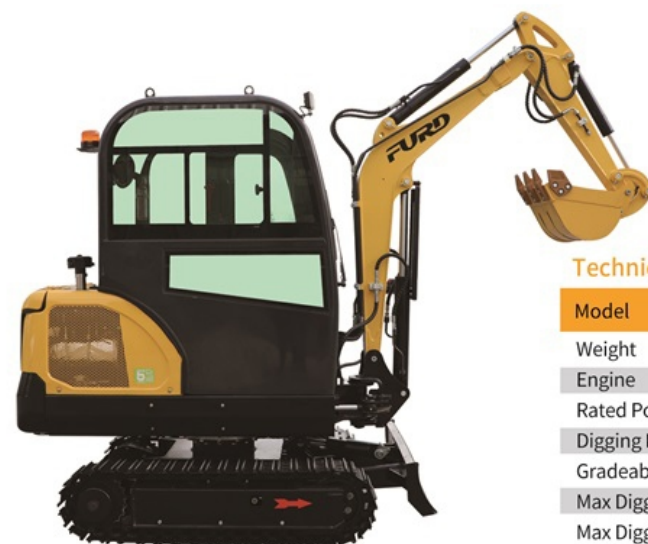


### Technical Specification

Model	FWJ-2000
Weight	2000kg
Engine	Laidong diesel engine 380
Rated power	13.5KW
Digging Bucket Capacity	0.035m <sup>3</sup>
Gradeability	40°
Max Digging Radius	3800mm
Max Digging Depth	2050mm
Max Digging Height	3016mm
Wheelbase	385mm
Track Length	1400mm
Track Width	230mm



## Mini Excavator



### Technical Specification

Model	FWJ-2300
Weight	2300kg
Engine	Laidong Diesel Engine 385
Rated Power	22.3KW
Digging Bucket Capacity	0.035m <sup>3</sup>
Gradeability	40°
Max Digging Radius	3800mm
Max Digging Depth	2241mm
Max Digging Height	3200mm
Wheelbase	385mm
Track Length	1400mm
Track Width	230mm

## Mini Excavator Attachments



Narrow Bucket



Bucket



Leveling Bucket



Rake



Ripper



Gripper



Auger



Breaking Hammer

## Mini Skid Steer Loader



Crawler Type

### Technical Specification

Model	FDL-C360		
Driving speed	0-6km/h	Engine	KOOP Diesel Engine KD192F
Power	13.5HP	Fuel Tank Volume	5L
Rated Load	200kg	Max Load	300kg
Max digging force	3.5KN	Wheelbase	850mm
Ground clearance	150mm	Bucket volume	0.12m <sup>3</sup>
Bucket width	1000mm	Track width	180mm
Max operating height	2450mm	Max height unloading angle	34°
Unloading height	1510mm	Unloading distance	450mm
Angle ( bucket flips at highest)	114°	Weight	900kg
Dimension	2100x930x1360mm		



Wheel Type

### Technical Specification

Model	FDL-W460		
Driving speed	0-6km/h	Engine	Rato Gasoline Engine
Power	23HP	Fuel Tank Volume	10L
Rated Load	300kg	Max Load	400kg
Max digging force	4.5KN	Wheelbase	850mm
Ground clearance	150mm	Tire Model	18*8.5-8
Bucket volume	0.12m <sup>3</sup>	Bucket width	1000mm
Max operating height	2450mm	Unloading height	1510mm
Unloading distance	450mm	Angle (bucket flips on the ground)	27°
Angle ( bucket flips at highest)	114°	Weight	1000kg
Dimension	2206x1150x1300mm		



## FDT-500 Mini Dumper



### Technical Specification

Model	FDT-500		
Engine	Briggs & Stratton Gasoline Engine 203CC	Power	6.5HP
Max Loading Weight	500kg	Walking Speed	2.88km/h
Min Turning Radius	1.15m	Gradeability	20°
Hopper Capacity	0.2m <sup>3</sup>	Tipping System	Hydraulic Tipper
Tilting Angle	100°	Hydraulic Oil Tank	15L
Machine Weight	442kg	Dimension	2050x730x730mm

## FDT-800 Mini Dumper



### Technical Specification

Model	FDT-800		
Engine	Briggs & Stratton Gasoline Engine XR420CC		
Max Loading Weight	500kg		
Min Turning Radius	1.3m		
Hopper Capacity	0.29m <sup>3</sup>		
Tilting Angle	95°		
Machine Weight	870kg		
Power	13.5HP		
Walking Speed	2.8km/h		
Gradeability	25°		
Tipping System	Hydraulic Tipper		
Hydraulic Oil Tank	12L		
Dimension	2480*860*1200mm		

## FDT-1200 Mini Dumper



### Technical Specification

Model	FDT-1200		
Engine	Air Cooled Diesel 186F		
Power	9HP		
Dumper Size	1100x1300x500mm		
Gearbox Material	Die-cast aluminum		
Track Size	230x72x46mm		
Track Material	Rubber track		
Bearing Wheel Quantity & Size	12x150		
Self Dumping	Hydraulic Self Dumping		
Start	Electric		
Max Loading Weight	1200kg		
Min Turning Radius	1m		
Gear	3 forward, 1 backward		
Gradeability	45°		
Machine Weight	550kg		
Dimension	2160x1130x1160mm		

## Mini Asphalt Paver



### Technical Specification

Model	FS100		
Engine	HONDA GXV160		
Rated Power	3.2kw/3600rpm		
Maximum Working Width	1000mm		
Minimum Working Width	250mm		
Maximum Spread Height	100mm		
Spread Width Control	The Four Baffles are Individually Controlled		
Hopper Volume	150L		
Spreading Heating Method	Engine Exhaust Heating System		
The Way of Walk	Hydraulic Bridge Drive		
Walk Speed	0-5Km/h		
Maximum Working Length	2250mm		
Length of Transport	1700mm		
Width of Transport	1100mm		
Height of Transport	1200mm		
Hydraulic Tank	6.5L		
Fuel Tank	1.8L		
Empty Weight	220kg		
Max.Operating Weight	500kg		